

ATTACHMENT 10
Open Space Strategy

Prepared by:

RPS

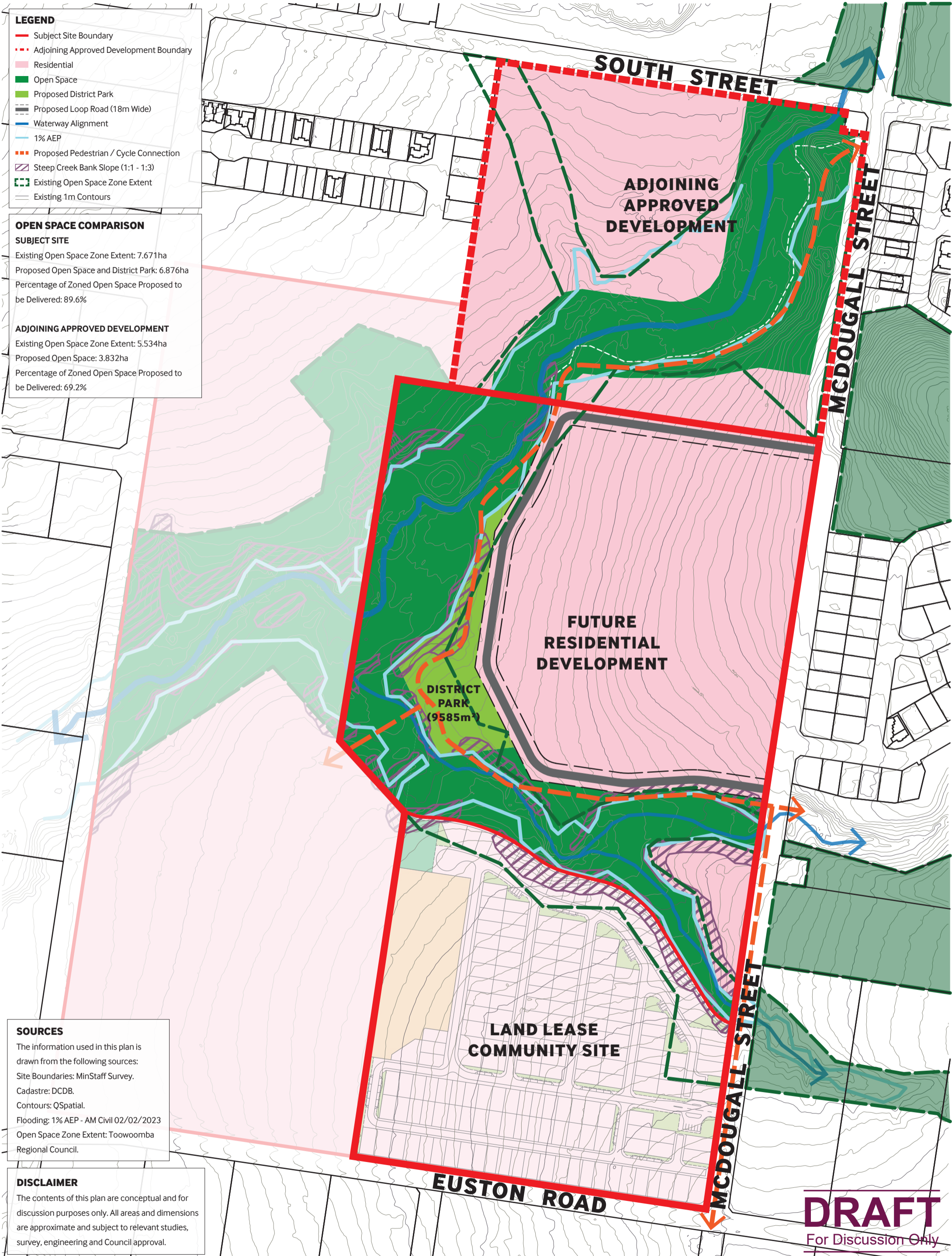
RECEIVED
8/9/2025
TOOWOOMBA
REGIONAL COUNCIL

- LEGEND**
- Subject Site Boundary
 - - - Adjoining Approved Development Boundary
 - Residential
 - Open Space
 - Proposed District Park
 - Proposed Loop Road (18m Wide)
 - Waterway Alignment
 - 1% AEP
 - - - Proposed Pedestrian / Cycle Connection
 - / - Steep Creek Bank Slope (1:1 - 1:3)
 - - - Existing Open Space Zone Extent
 - Existing 1m Contours

OPEN SPACE COMPARISON

SUBJECT SITE
 Existing Open Space Zone Extent: 7.671ha
 Proposed Open Space and District Park: 6.876ha
 Percentage of Zoned Open Space Proposed to be Delivered: 89.6%

ADJOINING APPROVED DEVELOPMENT
 Existing Open Space Zone Extent: 5.534ha
 Proposed Open Space: 3.832ha
 Percentage of Zoned Open Space Proposed to be Delivered: 69.2%



SOURCES

The information used in this plan is drawn from the following sources:

- Site Boundaries: MinStaff Survey.
- Cadastre: DCDB.
- Contours: QSpatial.
- Flooding: 1% AEP - AM Civil 02/02/2023
- Open Space Zone Extent: Toowoomba Regional Council.

DISCLAIMER

The contents of this plan are conceptual and for discussion purposes only. All areas and dimensions are approximate and subject to relevant studies, survey, engineering and Council approval.

DRAFT
 For Discussion Only

PLAN REF: **AU14570-21B**
 DATE: 08 AUGUST 2025
 CLIENT: PPA
 DRAWN BY: MD
 CHECKED BY: MD



**EUSTON ROAD, GLENVALE
 OPEN SPACE
 STRATEGY PLAN**

URBAN DESIGN
 Level 4 HQ South
 520 Wickham Street
 PO Box 1559
 Fortitude Valley QLD 4006
 T +61 7 3539 9500
 www.rpsgroup.com.au



© COPYRIGHT PROTECTS THIS PLAN
 Unauthorised reproduction or amendment not permitted. Please contact the author.